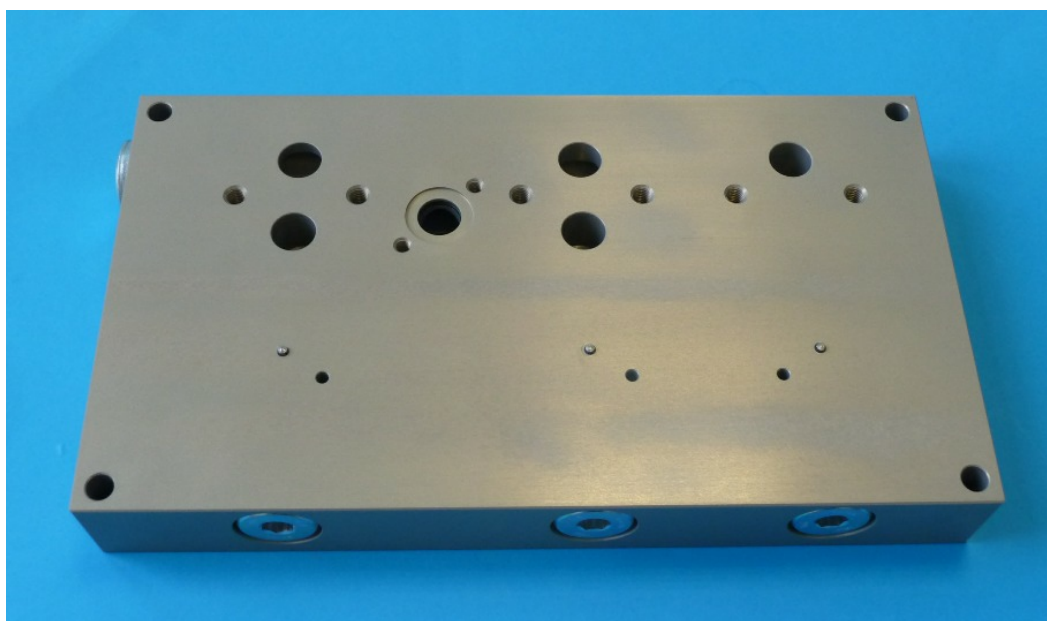


Base-plate for Sidel serie 2, Millesime 2 and 2+
Equipped with type 2628/2629 valves guaranteed 3 years

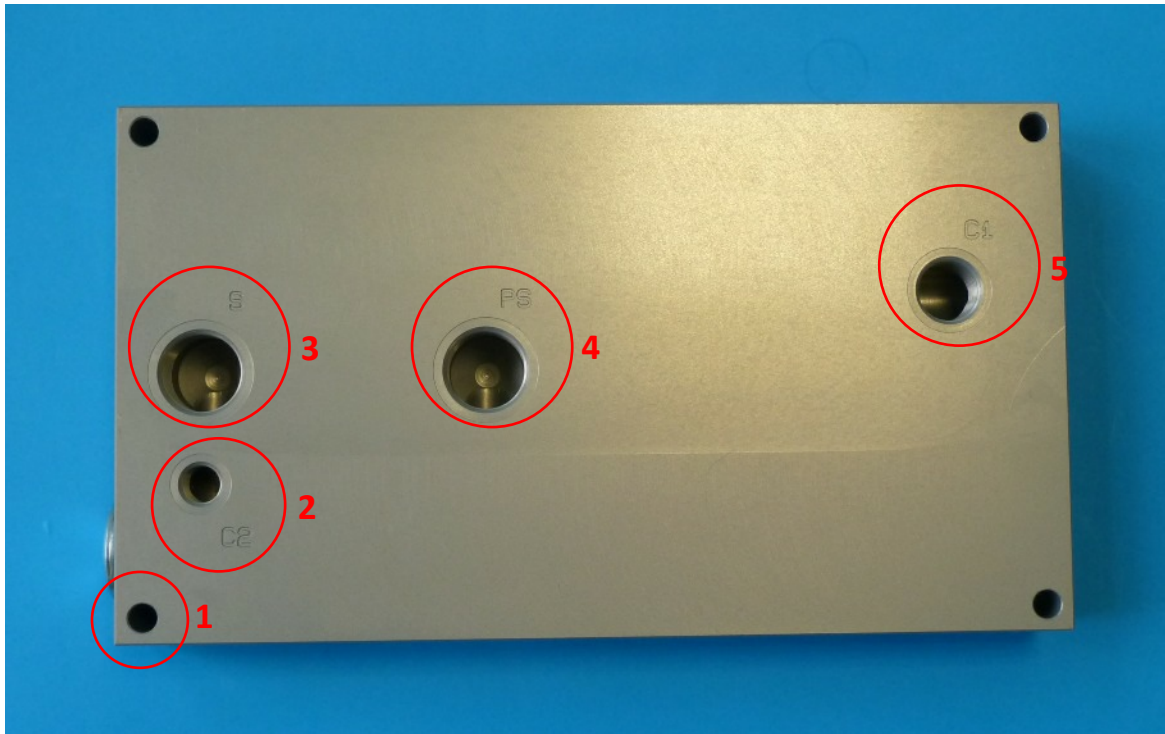


Base-plate **V2VS2BP3** for 3 electrovalves type 2628x2 and 2629x1

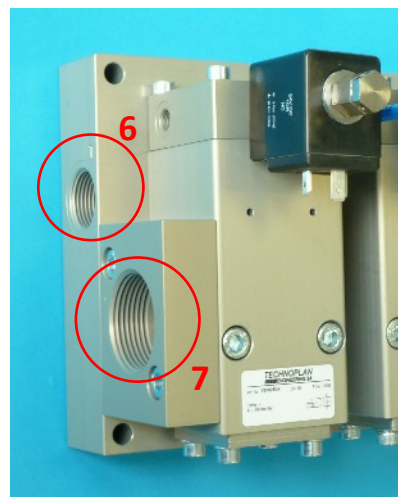
Side for setting-up valves



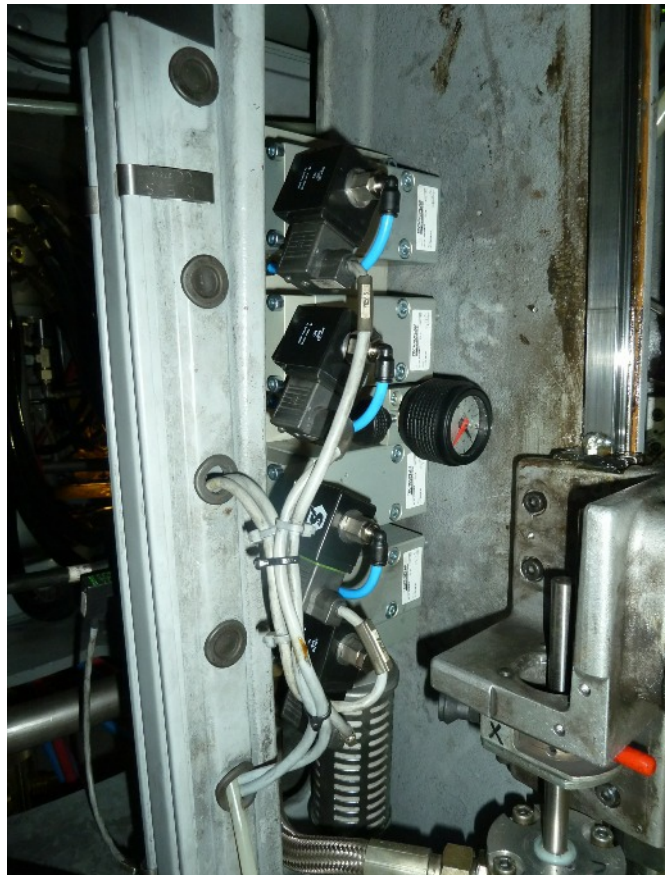
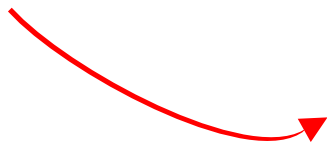
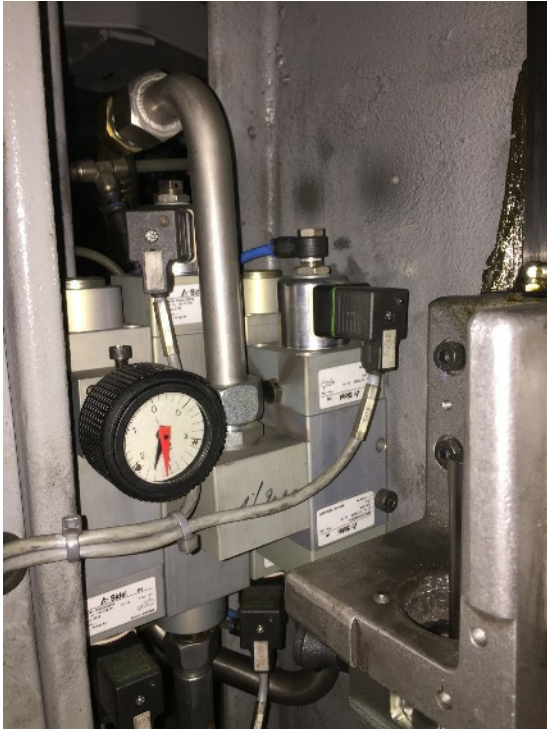
When dismantling the previous valves, recover the fittings !

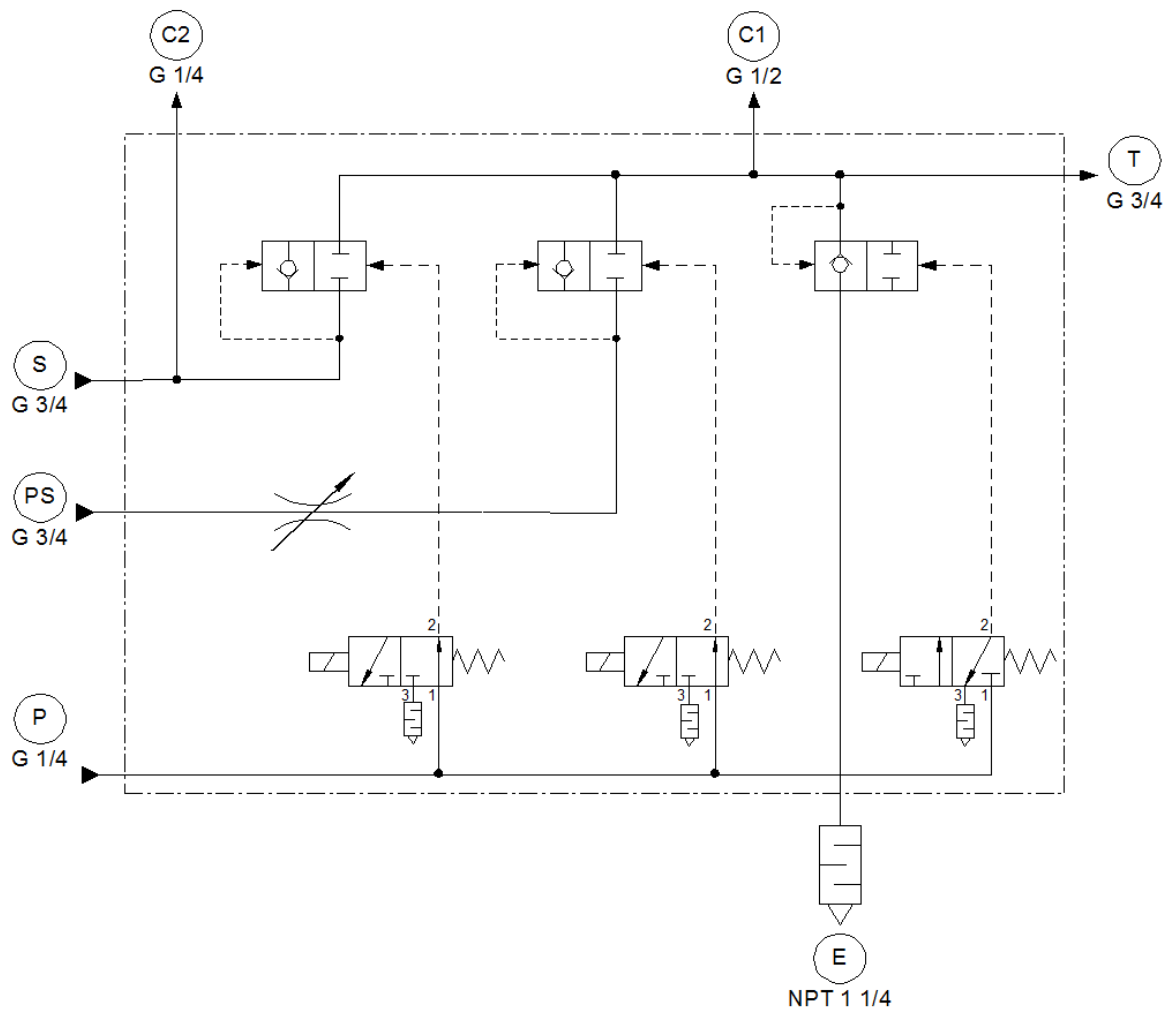


1. Screws : M8x65mm x4 units
2. C2 compensation via electrovalve : G 1/4'' (or cap)
3. S (Blow) : G 3/4''
4. PS (Preblow) : G 3/4''
5. C1 direct compensation to mold : G 3/8'' (or cap)
6. T (Nozzle) : G 3/4''
7. Silencer : NPT 1 1/4''
8. P Pilot air : G 1/4''



Example of conversion : Sidel SBO 16





Scheme

Without electrical piloting - With pneumatical piloting

Clock-wise from top-left :

C2 = compensation via electrovalve : G 1/4'' (or cap)

C1 = Direct Compensation to mold : G 3/8'' (or cap)

T = Nozzle : G 3/4''

E = Silencer : NPT 1 1/4''

P = Pilot air : G 1/4''

PS = Preblow : G 3/4''

S = Blow : G 3/4''